

# J.W. Speaker 9720 Xenon Worklight



## HID Xenon Work Lamp - Internal Ballast



### Description

For many years the 9720 set the heavy duty standard with its unique vibration dampening base. Proven in the field, operating in the harshest environments, and on the roughest machines. The rubber shock base is tested up to 50g and withstands the extreme vibration of shovels, dozers and draglines.

### Features and Benefits

- Completely sealed against water, dust and corrosion, IP68 rated;
- Stainless steel hardware;
- Xenon high impact chemical resistant housing;
- Rubber shock absorbing base helps the unit resist extreme shock and vibration.

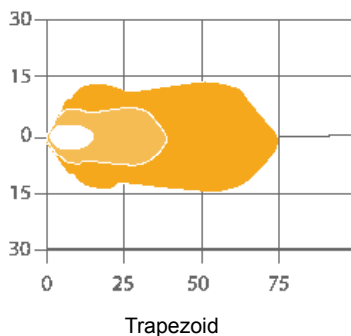
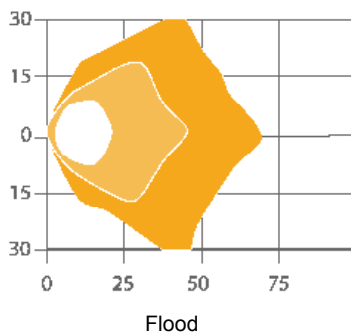
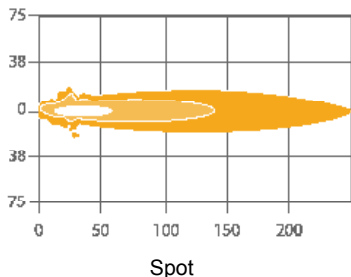
### Applications

Agriculture, Construction, Mining, Marine, Industrial and Forestry

### Tech Specs

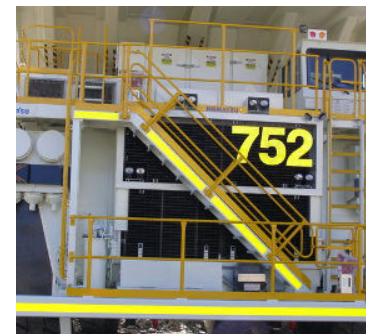
Beam Patterns	Flood, Trapezoid and Spot
rLumens	3,200 Lu
eLumens	2,200 Lu
Mounting	Flat Horizontal Surface
Voltage	12-24V DC
Amps	3.2A @ 12V
Wattage	35W
IP Rating	IP68
Bulb Life	~2,500 to +4,000 hrs
Mounting	Flat Horizontal Surface

Lux: 20 12 7 3.5 1



### Part No. Description

9720F	Speaker A9720 Series Xenon 24V 35W D1S Oval Flood Internal Ballast
9720T	Speaker A9720 Series Xenon 24V 35W D1S Oval Trap Internal Ballast
9720S	Speaker A9720 Series Xenon 24V 35W D1S Oval Spot Internal Ballast



Authorised Importer and Master Distributor



**APS USA**  
610 Gateway Center Way, Suites J & K  
San Diego, CA 92102 USA  
P: 1 619 263 4164  
F: 1 619 263 6814

**APS Australia**  
Unit 18, 110 Inspiration Drive,  
Wangara, WA 6065 Australia  
Phone: 61 (8) 9302 2369  
Fax: 61 (8) 6305 0047

**APS: Colombia**  
**Chile**  
**Perú**  
**Indonesia**  
**Mexico**

