

APS HL80 Series LED High Mast Light

Description

HL80 series modular LED high mast lights, combined with a variety of optical lenses to provide energy efficient and low-maintenance lighting solution. This high mast light is mainly used for industrial lighting in ports, wharfs, large-scale operation mines, airports, stadiums and other places that require sufficient perimeter lighting.

Features and Benefits

- High thermal conductivity aluminium extrusion molding heat sink, improve LED service life.
- Well-designed heat flow channels keep the luminaire excellent heat dissipation performance.
- Equipped with waterproof and breathable valve to balance the temperature and pressure
- A variety of beam patterns are available for more lighting options.
- Rated voltage: 100-240V AC; Frequency: 50/60Hz
- Rated power: 400W, 600W, 800W, 1000W; IP Rate: IEC60529, IP67

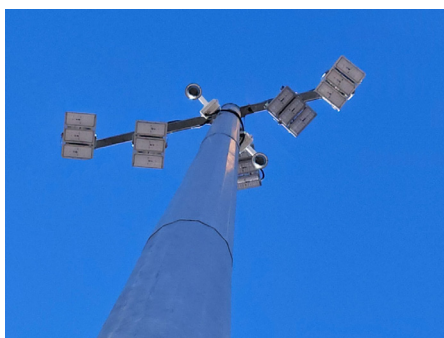
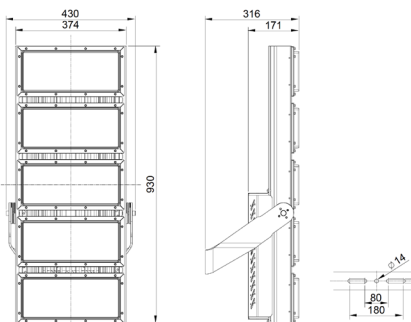
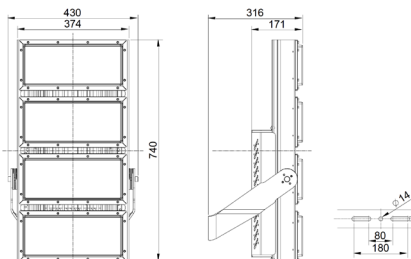
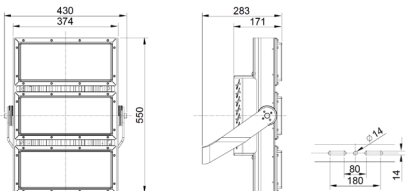
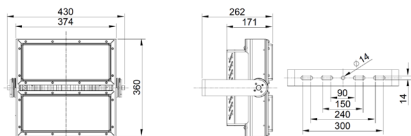
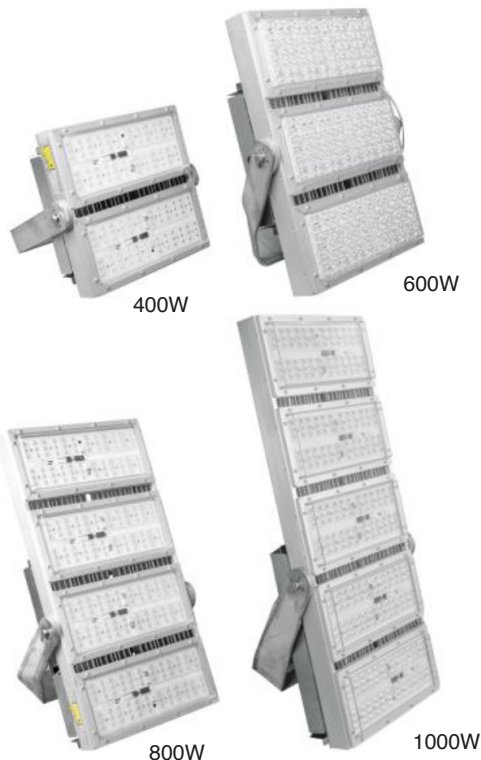
Applications

Ports, warf, mines, workshops, warehouses, perimeter lighting

Tech Specs

Input Voltage	100-240V AC, 50-60Hz
Rated Power	400W, 600W, 800W, 1000W
eLumens	54,000 eLu, 81,000 eLu, 108,000 eLu, 135,000 eLu
Beam Spread	10° or 60° beam options
Power Factor	>0.9
Source Life	50,000 hours
Color Temp.	6000K (also available in 2700K warm white option)
Light Efficacy	135 Lu/W, (115Lu/W warm white option)
EMC	IEC61000-4-2, IEC61000-4-3, IEC61000-4-4, IEC61000-4-5, IEC61000-4-6, EN55015 Class C
Standards	CE, EN60598-1, EN60598-2-5, EN62493, EN62471, EN55015, EN61547, EN61000-3-2, EN61000-3-3, UL159, UL8750/CSA C22.2 NO250.0-08, CSA C22.2 No250.13
Housing	Silvery white, Aluminum alloy, Anodized finish, Polycarbonate(PC)
Mounting	Stainless steel bracket
Temperature	-40°C ~ +50°C
Vibration level	ANSI C136.31, 1.5G
IP Rating	IP67, IEC60529
Anti-corrosion	ISO12944, C5 M
Weight	12kg, 17kg, 22kg, 28kg

Part No.	Beam	Voltage	eLumens	Dimensions (D, W, H)	Weight	Watts
HL80-2-10	10°	100-240V AC	54,000 eLu	262x430x360mm	12 kg	400W
HL80-2-60	60°	100-240V AC	54,000 eLu	262x430x360mm	12 kg	400W
HL80-3-10	10°	100-240V AC	81,000 eLu	283x430x550mm	17 kg	600W
HL80-3-60	60°	100-240V AC	81,000 eLu	283x430x550mm	17 kg	600W
HL80-4-10	10°	100-240V AC	108,000 eLu	316x430x740mm	22 kg	800W
HL80-4-60	60°	100-240V AC	108,000 eLu	316x430x740mm	22 kg	800W
HL80-5-10	10°	100-240V AC	135,000 eLu	316x430x930mm	28 kg	1000W
HL80-5-60	60°	100-240V AC	135,000 eLu	316x430x930mm	28 kg	1000W



Authorised Importer and Master Distributor

APS USA
sales@aps-supply.com
P: 1 619 263 4164

APS Australia
sales.apsa@aps-supply.com
P: 61 (8) 9302 2369 (WA)
P: 61 (02) 4915 6781 (NSW)

APS Colombia
ventascolombia@aps-supply.com
T: 57 (4) 444 7275

APS Chile
ventaschile@aps-supply.com
T: 56 (2) 2948 8044

APS Perú
ventasperu@aps-supply.com
T: 56 (2) 2948 8044

APS Indonesia
techcenter@aps-supply.com



APS Contact Page