

# Super Duty All-Weather™ LED SafetyWhips®

## Super Duty LED Warning Whips



### Description

**SafetyWhips® Super Duty LED Powered Warning Whips** are the toughest LED whip available. They feature protected LED lighting from top to bottom for maximum vehicle visibility beneficial to vehicles and equipment in extreme and harsh weather conditions. These safe and non-conductive Super Duty LED Fiberglass Whips are extremely durable and built to handle all environmental conditions that your vehicle and equipment may experience. Mine-tough and made of a solid fiberglass internal pole, these whips are protected against impact with their rugged polycarbonate external tubing. They are engineered to equalise pressures while blocking water & contaminants. Standard whip lengths are available from 4ft (1.22m) up to 12ft (3.66m), and custom sizes are available upon request. Various accessories and LED whip light color options are also available, including safety flags, mounts, single and dual color LED light combinations.

### Features and Benefits

- SafetyWhips® Super Duty LED Whip™ increases vehicle visibility to the max!
- External waterproof connector
- Engineered to equalise pressure while blocking water and contaminants
- Anodised aluminium base components.
- Optional mounting accessories: heavy duty flags made of high-quality Super Visibility™ nylon mesh flag made with or without 3M® Scotchlite® Reflective X.
- Assortment of options for your base, mount, flag, and lighting for your whip.
- Super Duty LED Whip Standard Whip Lengths: 3', 4', 5', 6', 7', 8', 10', 12'
- Custom lengths are available upon request
- Powered whips available only — 12V DC or 24V DC available

### Applications

Heavy vehicles, machinery and equipment, mining, agricultural, construction, aviation, and transportation industries.

### Tech Specs

Std. Whip Lengths	3', 4', 5', 6', 7', 8', 10', 12' (custom lengths are available upon request)
Powered Whips	12V DC or 24V DC
LED Colours	White, Amber, Blue, Green, Red
Additional options	Safety Flags, Mounts, Single & Dual Color LED light combinations
Connector	External waterproof connector. Inc. 1/2 inch Lock washer & Hex nut
Base Components	Anodised aluminium

Part No.	Description
SDL06W-XY	6' Super Duty LED Whip, White LEDs, Orange Flag (Yellow X)
SDL06A-XY	6' Super Duty LED Whip, Amber LEDs, Orange Flag (Yellow X)
SDL06*-xx	6' Super Duty LED Whip (replace * for Colour and xx for Flag)

Part No.	Description
SDL08W-XY	8' Super Duty LED Whip, White LEDs, Orange Flag (Yellow X)
SDL08A-XY	8' Super Duty LED Whip, Amber LEDs, Orange Flag (Yellow X)
SDL08*-xx	8' Super Duty LED Whip (replace * for Colour and xx for Flag)

Part No.	Description
SDL10W-XY	10' Super Duty LED Whip, White LEDs, Orange Flag (Yellow X)
SDL10A-XY	10' Super Duty LED Whip, Amber LEDs, Orange Flag (Yellow X)
SDL10*-xx	10' Super Duty LED Whip (replace * for Colour and xx for Flag)

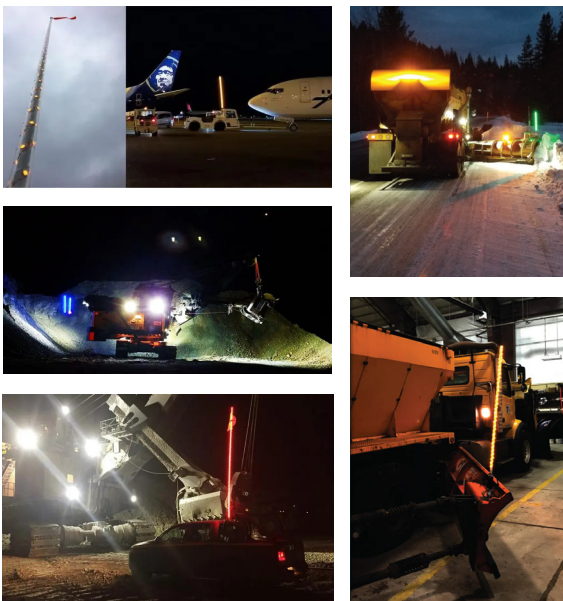
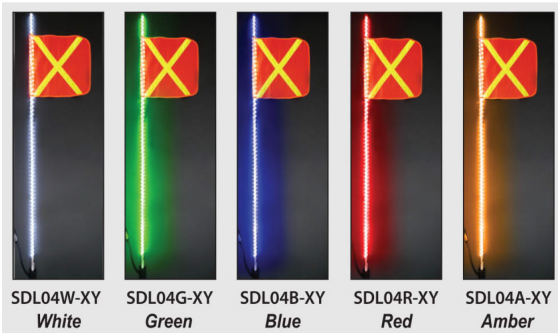
Part No.	Description
SDLx*-xx	Super Duty LED Whip (replace x for Length, * for Colour and xx for Flag)

PN ordering guide: **SDL04A-XY** = 4' Super Duty Amber LED Whip with Orange Flag (Yellow X)

Where: x = **Length** (03 = 3', 04 = 4', 05 = 5', 06 = 6', 07 = 7', 08 = 8', 10 = 10', 12 = 12')

\* = **Colour** (W = White, A = Amber, B = Blue, G = Green, R = Red)

xx = **Flag** (XY = Yellow X, XW = White X)



Authorised Importer and Master Distributor



**APS USA**  
sales@aps-supply.com  
P: 1 619 263 4164

**APS Australia**  
sales.apsa@aps-supply.com  
P: 61 (8) 9302 2369 (WA)  
P: 61 (02) 4915 6781 (NSW)

**APS Colombia**  
ventascolombia@aps-supply.com  
T: 57 (4) 444 7275

**APS Chile**  
ventaschile@aps-supply.com  
T: 56 (2) 2948 8044

**APS Perú**  
ventasperu@aps-supply.com  
T: 56 (2) 2948 8044

**APS Indonesia**  
techcenter@aps-supply.com



APS Contact Page