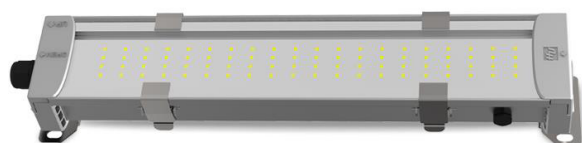
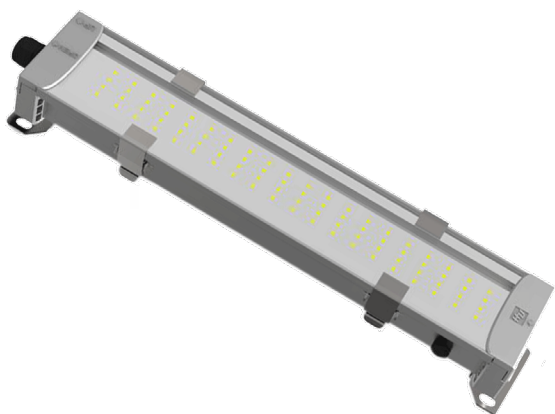


LY46A LED Emergency Walkway Light



Description and Applications

Specially designed as the lighting system for the cabin room and walkway of the large-scale port cranes (RTG, RMG, QC, STS), interior luminaires of wind turbines (nacelle, tower and hub) and ceiling and passages of marine vessels.

Features and Benefits

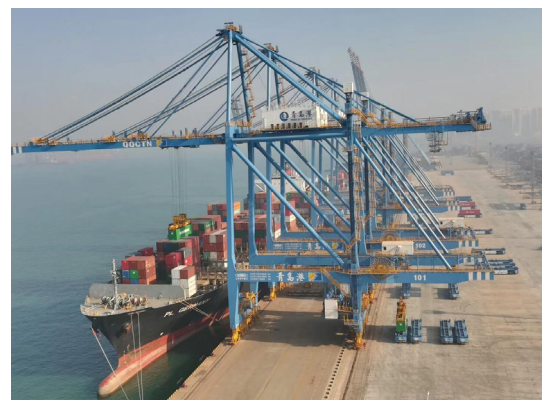
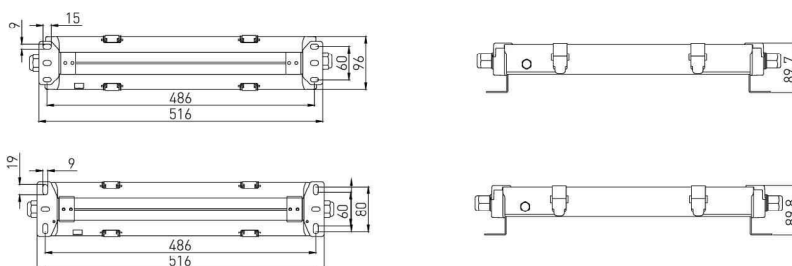
- Use 5mm tempered glass diffuser to protect from being ageing and fading. Frosted finishing process to prevent the glaring.
- Lifetime of LED light source up to 50,000hrs. Save at least 50% energy comparing the fluorescent lamp. With the long term operational stability and maintenance free.
- Compact structure features small size and light weight. Adjustable mounting bracket makes it convenient for the field installation.
- The light is lit and the battery is charged when it is powered. Ni-Mh battery works and light is in emergency mode when it blacks out.
- Emergency light is not less than 90 minutes.
- Air valve design to protect the electronics components from being overheated to guarantee the long lifetime.

Tech Specs

Color Temperature	Cold White: 5700K Warm White: 2700K
Lumens	Cold White: 2260lm (18W), 2550lm (20W) Warm White: 1500lm (18W), 1800lm (20W)
LED Lifetime	≥50,000hrs
Beam Angle	50°×30°
Rated Voltage	DC18V-DC32V
Rated Power Consumption	18W 20W
EMC	EN 55015/ CISPR 15
Connect	Lead Wire / Connector
Material	Cover: PC Body: Aluminum
Operating Temperature	Ta -40°C ~ +70°C
Anti-vibration	IEC60528 20G
Anti-shock	IEC60528 60G
Anti-corrosion	ISO9227 720H / C5-M
Mount	M10 stainless steel bolt
IP Rate	IEC60529 IP68 / IP69K
IK Rate	IK08
Weight	0.6kg

Part No.	Description
LY46A	LED Emergency Linear Light LY46, Emergency Light is not less than 90 minutes

Line Drawing



Authorised Importer and Master Distributor



APS USA
sales@aps-supply.com
P: 1 619 263 4164

APS Australia
sales.apsa@aps-supply.com
P: 61 (8) 9302 2369 (WA)
P: 61 (02) 4915 6781 (NSW)

APS Colombia
ventascolombia@aps-supply.com
T: 57 (4) 444 7275

APS Chile
ventaschile@aps-supply.com
T: 56 (2) 2948 8044

APS Perú
ventasperu@aps-supply.com
T: 56 (2) 2948 8044

APS Indonesia
techcenter@aps-supply.com



APS Contact Page