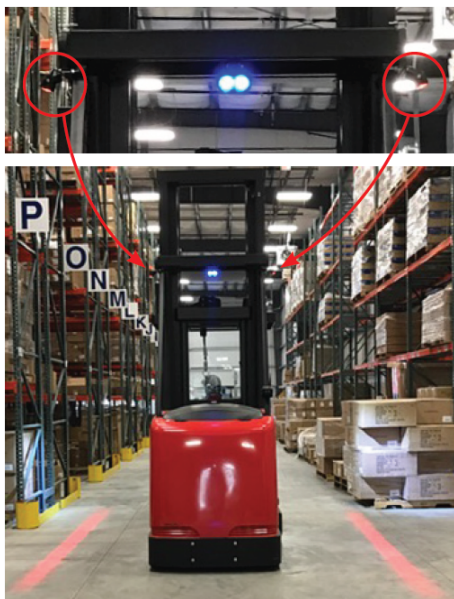
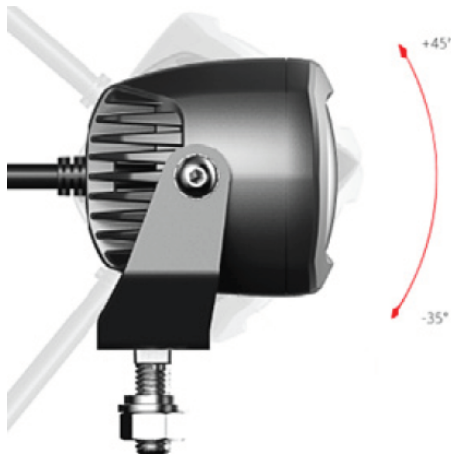


ECCO EW2015R

LED Pedestrian Boundary Line



Description

ECCO's EW2015R LED Pedestrian Boundary Line is designed specifically for material handling applications to provide a visual warning for pedestrians in the vicinity of mobile equipment. This light is intended to supplement a 360° warning light by projecting a red boundary line onto the ground on each side of the vehicle. This additional safety feature is especially useful where blind corners are present (i.e. warehouse racking) and is likely to be seen by pedestrians who are not looking up or paying close attention to their surroundings. Featuring 12-80 VDC operation, an aluminum housing, and polycarbonate lens, the EW2015R is extremely resistant to impact and vibration damage.

Features and Benefits

- Three 3-watt LEDs
- Red boundary line projection
- Pedestrian warning for material handling applications
- Aluminum heatsink housing
- Polycarbonate lens

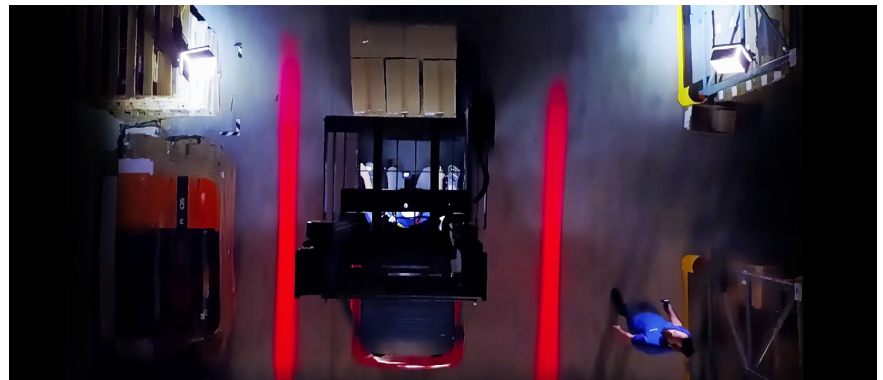
Applications

Forklifts, machinery, etc.

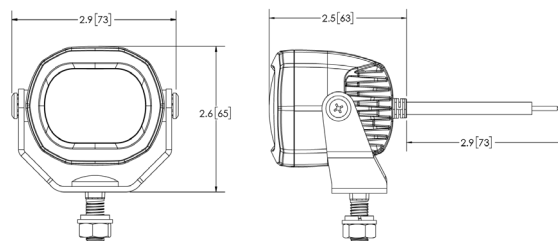
Tech Specs

LED Colour	Red
Voltage	12-80V DC
Amps	1.1A
IP Rating	IP67
Approval	R10, RCM, UL, RoHS
Warranty	5 years

Part No.	Description
EW2015R	ECCO EW2015R LED Pedestrian Boundary Line: Red, 12-80V DC, 1.1A



Tech Drawings



Authorised Importer and Master Distributor

APS USA
sales@aps-supply.com
P: 1 619 263 4164

APS Australia
sales.apsa@aps-supply.com
P: 61 (8) 9302 2369 (WA)
P: 61 (02) 4915 6781 (NSW)

APS Colombia
ventascolombia@aps-supply.com
T: 57 (4) 444 7275

APS Chile
ventaschile@aps-supply.com
T: 56 (2) 2948 8044

APS Perú
ventasperu@aps-supply.com
T: 56 (2) 2948 8044

APS Indonesia
techcenter@aps-supply.com



APS Contact Page